



## Web Scout Console

GIS\Solutions is pleased to announce our enterprise level, Web-based Data Management and Visualization System called the Web Scout Console. With Web Scout Console, you can publish relevant information to all project stakeholders (other offices, clients, subcontractors, regulators) with ease. Web Scout Console delivers sophisticated data search and visualization tools in an innovative format geared towards casual users. These integrated tools enable users to take information they currently have in databases, spreadsheets, reports, pictures and drawings and “paint” it onto a map to clearly visualize specific trends and quickly make better project decisions.

### *Features of the Web Scout Console:*

- Runs on a secure Windows web server
- No local client tool installation required
- To operate the system, users need only:
  - A web browser
  - Access to a secure web site hosting their project
- An Enterprise Level System
- Hosting on Your Web Server or at GIS\Solutions

When users log on to the system, their unique user name/password combination is related to a unique list of projects to which they have access. These projects are listed and also shown on a map. Clicking on a project or its map icon opens the project (see Figures 1 and 2).

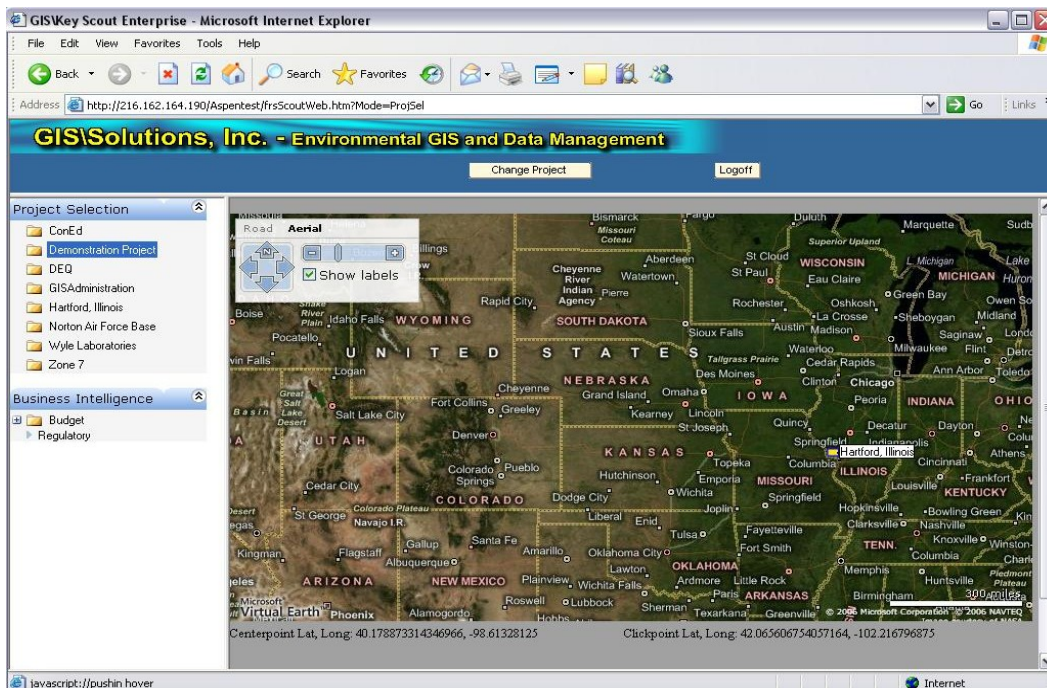


Figure 1. Web Scout Console Project Selection

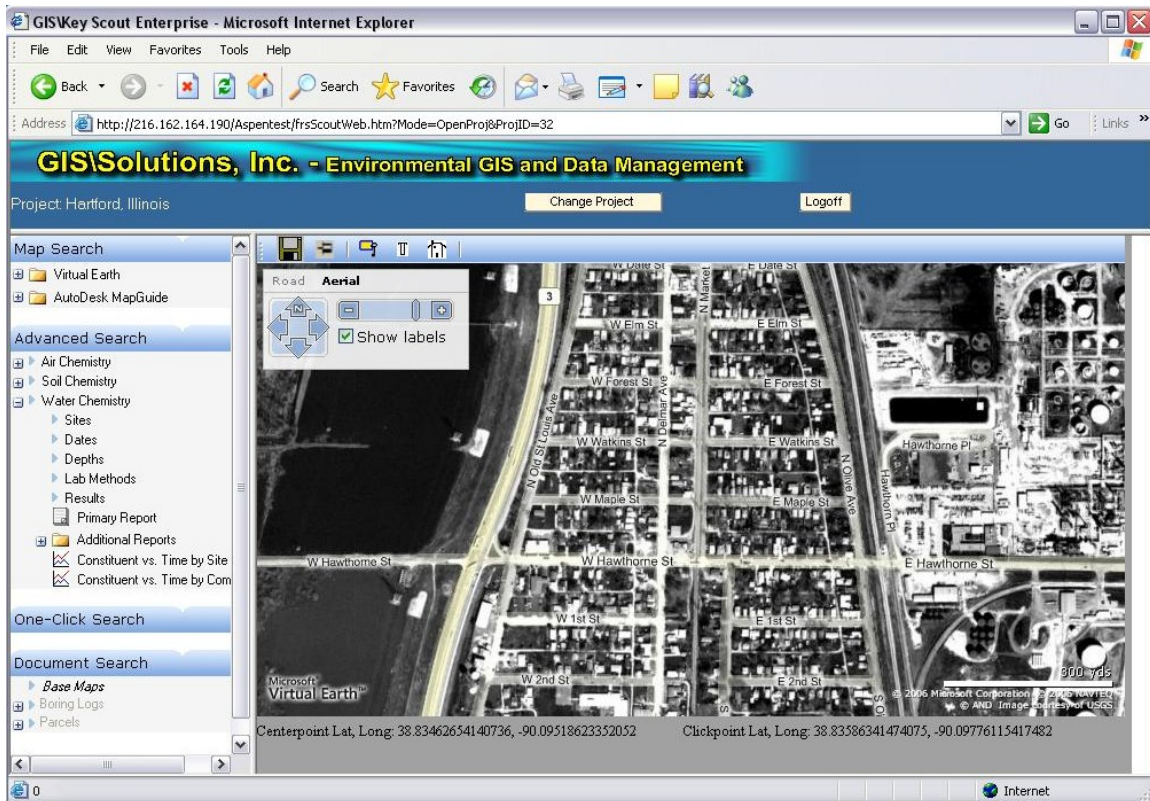


Figure 2. Web-Scout Project Screen

## Functionality of the Web Scout Console:

### 1. Mapping

- Map-based data and/or document searches
- Map Guide/Microsoft Virtual Earth Integration – simplified map navigation
- Display of:
  - Maps--Site Orientation
  - Data Posting
  - Static Work Products
- “Geo-Intelligence”-- Any type of data (e.g., report, graph, picture, drawing, etc.) can be linked to any map region (e.g., point, line polygon) and retrieved later from the map. New data dragged and dropped from your desktop is automatically linked properly to the map.

*Example: a document or picture could be linked to a parcel or pipeline segment.*

- 2. **Simplified Data Search** – Re-usable searches, initiated from the map or from data screens, allow users to produce predefined output after only “One Click”.

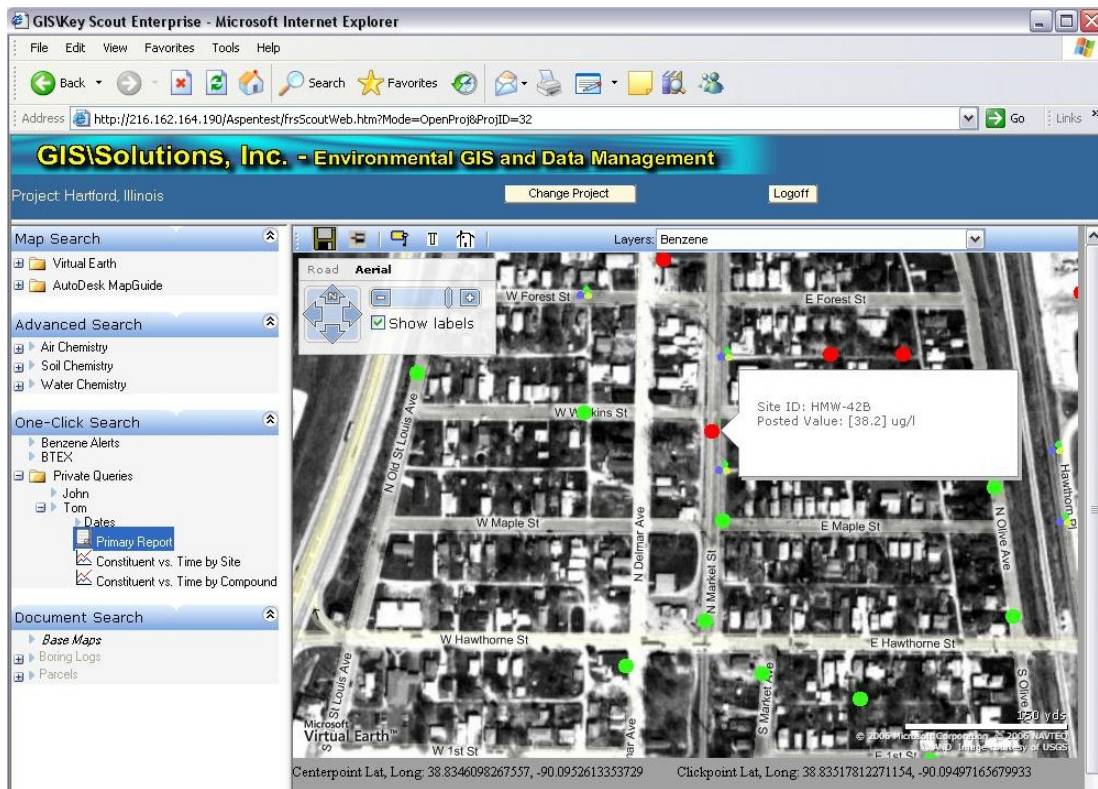


Figure 3. Web-Scout Chemistry Data Posting from Simplified Data Search

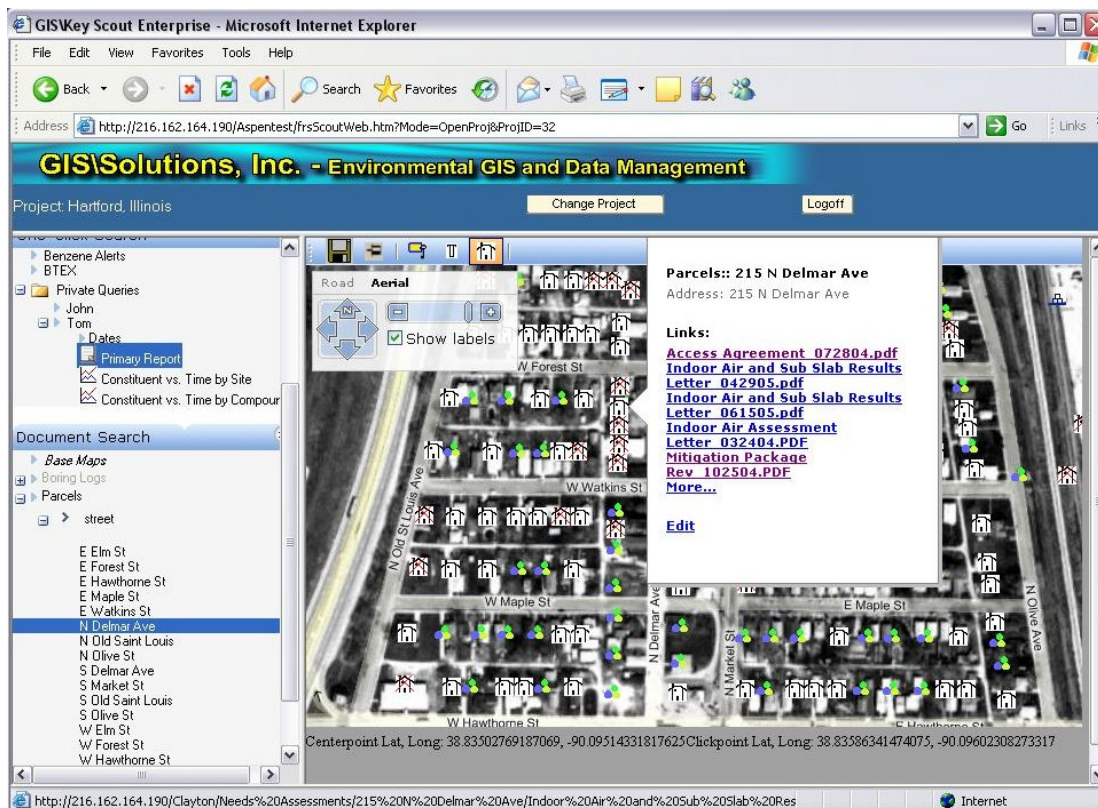


Figure 4. Web-Scout Document Retrieval (Example Shows Documents Linked to Parcels)

## Functionality of the Web Scout Console (continued)

### 3. Reports

- All current GIS\Key Chemistry Reports –
  - ❖ Primary
  - ❖ Q/C
  - ❖ Alert Level
  - ❖ Sample-based
- Hydrology -- Fluid Levels
- Web Preview with Local Print and Export-to-File capability
- Custom Reports available from GIS\Solutions

GISKey Scout Enterprise - Microsoft Internet Explorer

Address: http://216.162.164.190/Aspentest/frsScoutWeb.htm?Mode=OpenProj&ProjID=32

GIS\Solutions, Inc. - Environmental GIS and Data Management

Project: Hartford, Illinois

Map Search: Virtual Earth, AutoDesk MapGuide

Advanced Search: Air Chemistry, Soil Chemistry, Water Chemistry

One-Click Search: Benzene Alerts, BTEX, Private Queries (John, Tom), Dates (Primary Report, Constituent vs. Time by Site, Constituent vs. Time by Compound)

Document Search: Base Maps, Boiling Logs, Parcels

Page: 1 of 1  
Date: 03/20/2006

PERIOD: From 4/1/2005 thru 5/31/2005 - Inclusive  
SAMPLE TYPE: Water

SITE	DATE	SAMPLE ID	Benzene (ug/l)	Ethylbenzene (ug/l)	Toluene (ug/l)	Xylene (total) (ug/l)
EPA - Maximum Contaminant Levels Goal			0	700	1000	10000
BIRCH-POTABLE	04/15/2005	Birch Potable 050	<0.5	<1.0	<1.0	<1.0
BIRCH-POTABLE	04/15/2005	Birch Potable 050	<0.5	<1.0	<1.0	<1.0
BIRCH-SO_TANK	04/22/2005	Birch Street - Sout	[37.9]	41.3	61.2	182
GB-01	05/05/2005	GB-01/050505	<0.5	<1.0	<1.0	<1.0
GB-06	05/05/2005	GB-06/050505	<0.5	<1.0	<1.0	6.5
HB-32	04/14/2005	HB-32/050414	[836]	4.4	7.4	4.9
HB-33	04/15/2005	HB-33/050415	[17200]	[766]	894	2100
HB-37	04/18/2005	HB37/050418	[30500]	[2770]	[30600]	[12500]
HB-38	04/14/2005	HB-38/050414	[267]	5.9	22.1	58.5
HMMW-1	04/18/2005	HMMW1/050418	<0.5	<1.0	<1.0	<1.0

Figure 5. Web-Scout Sample Primary Report Showing Action Level Exceedances

## Functionality of the Web Scout Console (continued)

### 4. Graphs

#### Chemistry

- Constituent vs. Time or Depth
- Concurrent Alert Level Display
- View by Compound (for multiple sites) or by Site (multiple compound)

#### Hydrology

- Fluid Levels vs. Time

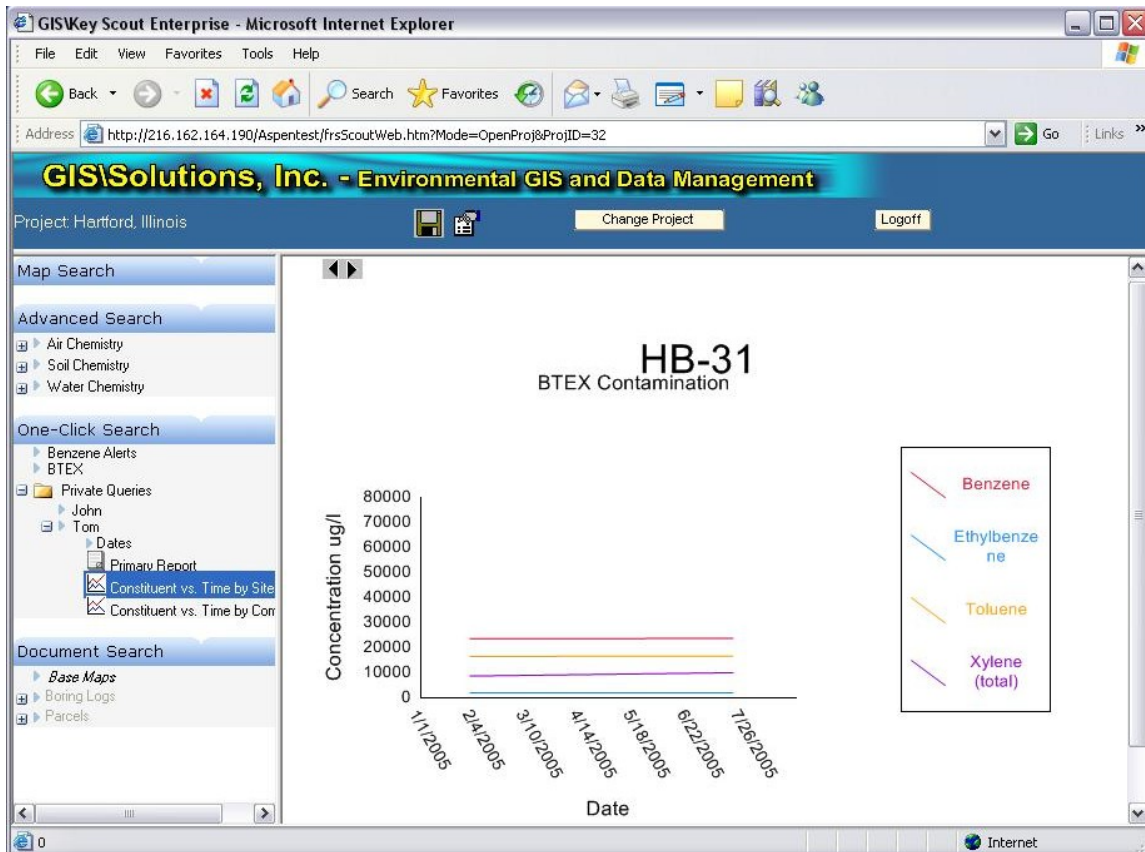


Figure 6. Web-Scout Sample Chemistry Graph

5. **Data Exports** -- A variety are standard and easy to use with 3<sup>rd</sup> party software

6. **Customization** – GIS\Solutions can create custom reports, exports, graphics or mapping output per customers' request.

We would like to show you this unique Web based software! Please call GIS\Solutions at 207-363-9237 or E-mail us at [sales@giskey.com](mailto:sales@giskey.com) to arrange a demonstration.

This document was created with Win2PDF available at <http://www.win2pdf.com>.  
The unregistered version of Win2PDF is for evaluation or non-commercial use only.  
This page will not be added after purchasing Win2PDF.