

Published by:
 GIS\Solutions, Inc.
 1870 Olympic Blvd #110
 Walnut Creek, CA 94596
 Tel: (925) 944-3720
 Fax: (925) 944-3302
<http://www.giskey.com>
 E-mail: sales@giskey.com

The "Key"

Newsletter

Third Quarter 2003



GIS\Key v4.x Reader & auto-NPDES Modules

Version 4.x introduces GIS\Key Reader. Modeled after the Adobe Acrobat Reader, it allows the distribution of project data or portions of the data to other environmental professionals who can then view or output, but not edit, project data with an easy-to-use software module. The Reader allows for off-site distribution of project data on an as needed basis.



The GIS\Key Reader uses an encrypted, password-protected database designed to work with a simplified version of the Scout Reporting Tools. A GIS\Key Software Suite power user authors data into a Reader (.GISKEY) file in a process very much like creating a .PDF file. Power users control Reader file contents by project, by sites by dates, and by themes.

by dates, and by themes. GIS\Key Reader users can select data using simplified query tools, create a variety of reports and export data as TXT, DBF, XLS, WK1, and MDB formats.

The GIS\Key Reader is so simple to use that no training is required beyond perusing the Help file.

The Reader includes "auto-NPDES" — standard NPDES data storage & DMR Reporting Modules.

For most permitted facilities, this capability offers a simple and inexpensive database solution for NPDES reporting, much more efficient than using complicated spreadsheets, developing a proprietary database.

(Continued on page 2)

In This Issue ...

GISKey v4.x Reader & auto-NPDES Modules Released!

GIS\Key v4.1 available

Technical Support Corner

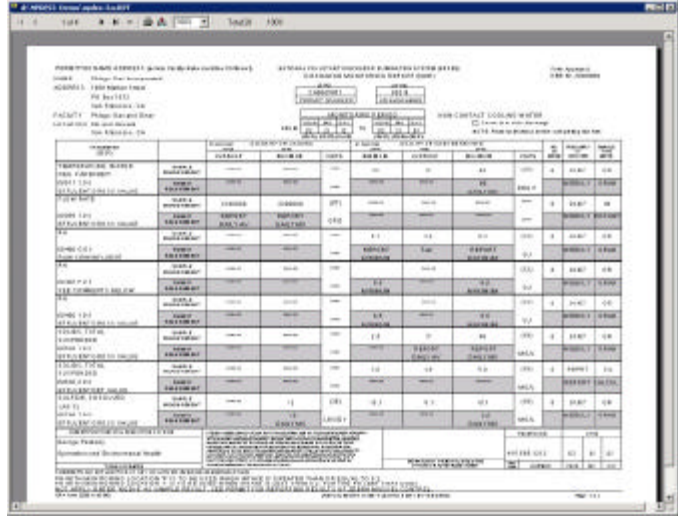
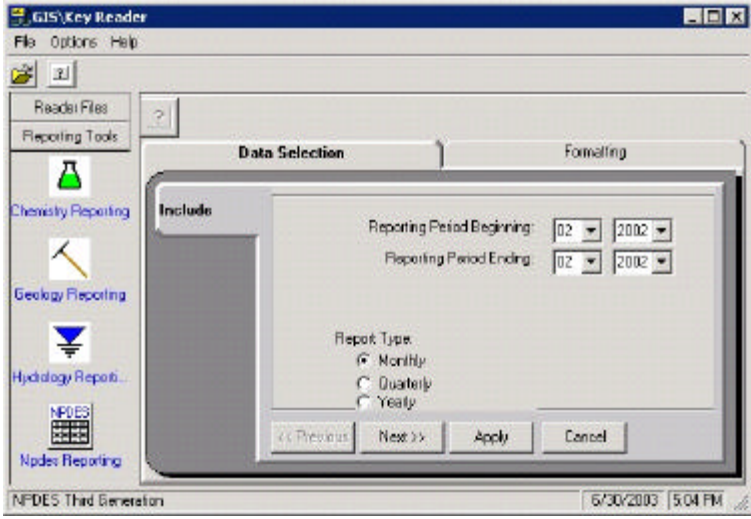
Another "Easter Egg" hunt

GIS\Key v4.1
Now Released!

Visit our website at:
www.giskey.com

For download instructions.

Version 4.1 Includes:
Box Plots
Reader Archiving



The "Key" Newsletter

Third Quarter 2003

We've done it again!!!

The response to our last "Easter Egg" hunt was so good, we have decided to hide another egg on our website:

<http://www.giskey.com>

This time, the first ten people to call us with the location of the "Easter Egg", will be eligible to win a prize. *See details below*
Congratulations to the last winners, listed at bottom of the page.

Technical Support Corner

Save Time with Multiple Basemaps

GIS\Key can support multiple basemaps as long as each basemap has the same set of coordinates. This can be a big time saver if you create the same drawings on a regular basis (e.g., water level gradient maps, chemical concentration maps). Instead of starting each drawing from the basemap, create multiple basemaps for each type of drawing (e.g., gradient map, benzene map for Area of Concern 1, TCE concentration map for SWMU 2). Then use those drawings as your template for the next quarter. To do this:

1. Create your drawing (e.g., gradient map). Finalize the drawing (e.g., add a title block and border, move site labels, add a legend).
2. When complete, save a copy of this drawing as your template for future drawings.
3. To create a new drawing from that template, open the template from the Scout Project Manager.
4. Click the 'Model' tab.
5. Bring in the new data using the 'GIS\Chem', 'GIS\Geo', or 'GIS\Hydro' menus. If the symbol settings (set in 'GIS\Utility' - 'Site Map Symbols' - 'Setup') have not changed, the new data will replace the old and THE SYMBOL LABELS WILL STAY WHERE THEY ARE.
6. To update the Title Block and Border, click the 'GIS' tab (puts you in Paper Space), and select 'GIS\Utility' - 'Title Block and Border' - 'Edit'.

Edit Your Map Report Tables

For those of you who want more control of your Map Report Tables, (e.g., show only values above action levels), check out the Map Report Editor, an Excel Add-in. The Map Report Editor is available in the Downloads section of our website.

Contest Details:

1. The first ten people to contact us, with the item & location, are eligible
2. One winner per office, per quarter
3. Winners to be announced in next newsletter (with permission)
4. Prizes may not be returned or exchanged
5. Employees and associates of GIS\Solutions, Inc. are not eligible

GIS\Key v4.x Reader & auto-NPDES continued...

Who needs Auto-NPDES?

Companies that have:

1. Major NPDES Permits
2. At least five outfalls
3. Outfalls with complicated rules
4. Virtual Outfalls

Both GIS\Key v4.x and the Reader come with a standard Federal DMR Report. Additional state or local reports can easily be added.

Start saving time and money today! Call us to learn more about automated NPDES reporting.

Main office, Walnut Creek, CA:
Tel: 925-944-3720

Dept/Person	Voicemail	E-mail
Larry Eytel	207-363-9237	sales@giskey.com
Tech Support	3#	support@giskey.com
Ken Stevens	main	kstevens@giskey.com
Sue Poole	main	spoole@giskey.com
Rob Romzick	805-967-8066	rromzick@giskey.com
License Key	main	license@giskey.com

A heartbreaking farewell....

Tom Rooze will be leaving GIS\Solutions as of July 18th. He will continue using GIS\Key at a local water agency to model groundwater flow. Tom will definitely be missed by everyone. We wish him all the best and would like to thank him for all his hard work and contributions. Thank you, Tom.

Winner's of the "Easter Egg" hunt, 1st Quarter 2003:

1. Ashkey Heggie - General Engineering Lab, Charleston, SC
2. Cindy Snyder - Tetrattech FW, Inc. Morris Plains, NJ
3. Sara Rochelt
4. Lisa Taylor - Woodard & Curran, Bangor ME
5. Brian Johnson - AMEC, Portland, OR