



GIS\Key v4.2.1 Update News

Scout

Web Based Update Manager

Downloads GIS\Key updates from our Web site and installs them automatically. Activated directly from Scout.

Air

The Air matrix has been added to the GIS\Key database. To support Air data, the Scout unit supports unit conversions between ppbv, ppmv, ug/m3, and mg/m3.

Chemistry Reports

Color for Primary Reports

Primary Reports support color. There are independent controls for the Title, Column Headers, Detail Line, Notes and alternating data lines. Cell controls include fonts, alignment, shadows and background color for data and for data conditions when cell value concentration exceeds an action level and when the reporting limit exceeds an action level.

Page: 1 of 5
Date: 03/14/2005

Sample Primary Report

REF ID: From 01/01/1989 thru 12/31/1989 - Selected
SAMPLE TYPE: Water

CONSTITUENT	SITE	SAMPLE ID	EPA - Maximum C Contaminant Level	MW 01A 01/01/1989	MW 01A 04/01/1989	MW 01A 07/01/1989	MW 01A 10/01/1989	MW 04A 01/01/1989
		DATE	is Goal	Primary	Primary	Primary	Primary	Primary
pH	(SU)			7.00	7.06	NT	7.04	7.85
Specific Conductance	(uMhos)			1000	947	NT	1023	1340
Temperature	(C deg)			17.8	17.8	NT	17.8	21.3
Turbidity	(ntu)			NT	NT	NT	NT	NT
Dissolved Oxygen	(mg/l)			NT	NT	NT	NT	NT
Benzene	(mg/l)	0		0.0005U	0.0005U	0.0005U	0.0005U	0.0005U
Ethylbenzene	(mg/l)	0.7		0.0005U	0.0005U	0.0005U	0.0005U	0.0005U
Toluene	(mg/l)	1		0.0005U	0.0005U	0.0005U	0.0005U	0.0005U
TPH (cold extractables)	(mg/l)			0.1U	0.1U	0.1U	0.1U	0.1U
Xylene (total)	(mg/l)	10		0.001U	0.001U	0.001U	0.001U	0.001U

Figure 1. GIS\Key Primary Report with Color & Font Control

Dual Units

An additional report, specifically design for Air, has been included that allows the reporting of dual units. For example, you can show both ug/m3 and ppbv.

Scout Web

GIS\Solutions is pleased to announce our enterprise level, Web-based Data Management and Visualization System. It is available now as an upgrade to your current GIS\Key network system.

Web Scout delivers the ease-of-use and functionality of the Scout and its integrated output tools to all project stakeholders through the Internet.

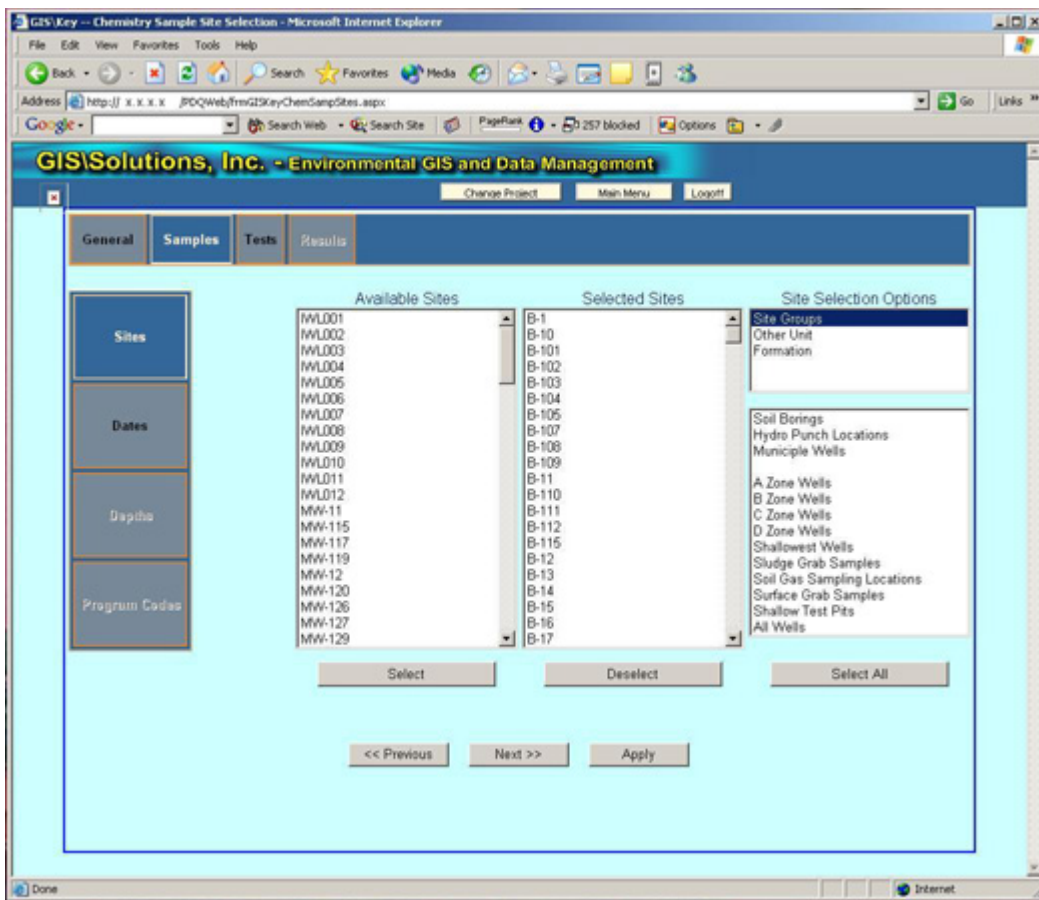


Figure 2. Web Scout Sample Selection Drill-Down

Primary features of the Web Scout system are:

- Runs on a secure Windows web server
- No local client tool installation required
- To operate the system, users need only:
 - A web browser
 - Access to a secure web site hosting their project
- Single Project or Enterprise Pricing Available
- Hosting on Your Web Server or at GIS\Solutions' Secure Web Site

Initial Release of Web Scout includes:

1. Reports
 - a. All current Chemistry -- Primary, Q/C, Alert and Sample-based reports (including color)
 - b. Hydrology -- Water Levels and Flow
 - c. Web Preview with Local Print and Export-to-File capability
2. Graphs
 - a. Chemistry
 - i. Constituent vs. Time or Depth
 - ii. Concurrent Alert Level Display
 - iii. View by Compound (for multiple sites) or by Site (multiple compound)
 - b. Hydrology
 - i. Water Levels/Time
 - ii. Flow and Flux

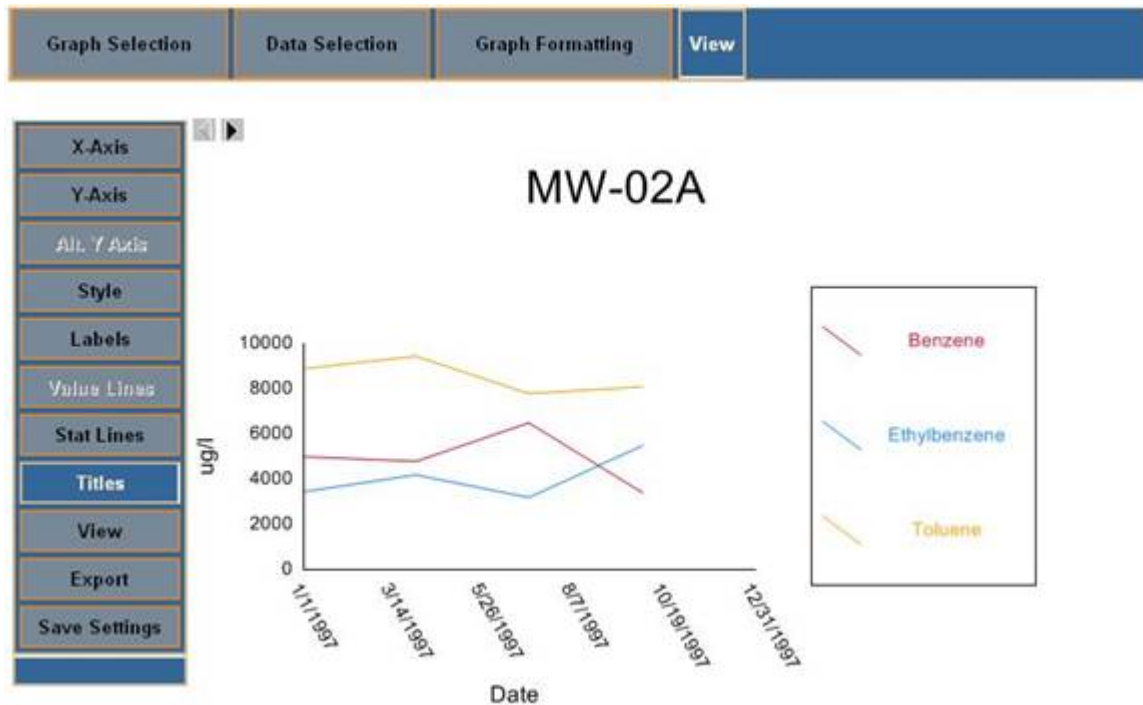


Figure 3. Web Scout Chemistry Graph

3. A Variety of Exports
4. PDQ Document Management Module -- Provides user defined storage/retrieval of project metadata (reports, graphs, pictures, maps, logs, etc.) plus GIS integration (coming Summer 2005).
5. Mapping
 - a. Point theme output for use with local ACAD, ArcGIS or contouring software
 - b. PDQ -- Map Guide/ArcIMS Integration (available Summer 2005) for display of:
 1. Maps--Site Orientation
 2. Static Work Products
 3. Data Presentation

Please call us for a demonstration of Web Scout and a discussion of how it can help your project team!

We invite you to visit our website, at www.giskey.com or contact us for an online evaluation and demonstration.

P.O. Box 1738
 York Beach, ME 03910
 207-363-9237

sales@giskey.com

GIS\Key Database

Coordinate Systems

The GIS\Key Software Suite supports the NAD83 datum. From the database menu bar select Settings/ Project and then set the Coordinate Precision to 6.

Air

The GIS\Key Software Suite supports AIR as a matrix. Use samp_type = "A" for EDDs. Supported units are ppbv, ppmv, ug/m3, and mg/m3.

Structural Database Changes

Updates

The pesky problems with .3** archived data files between versions has been eliminated with an automatic project archive.

Compound.dbf

Incorporating Air into the database requires the inclusion of molecular weight by compound. Molecular weight is required to convert units between ppbv and ug/m3. The field is Mol. Weight in the constituents file. GIS\Key is distributing a list of molecular weights for a TO15 with the update.

LabBuild

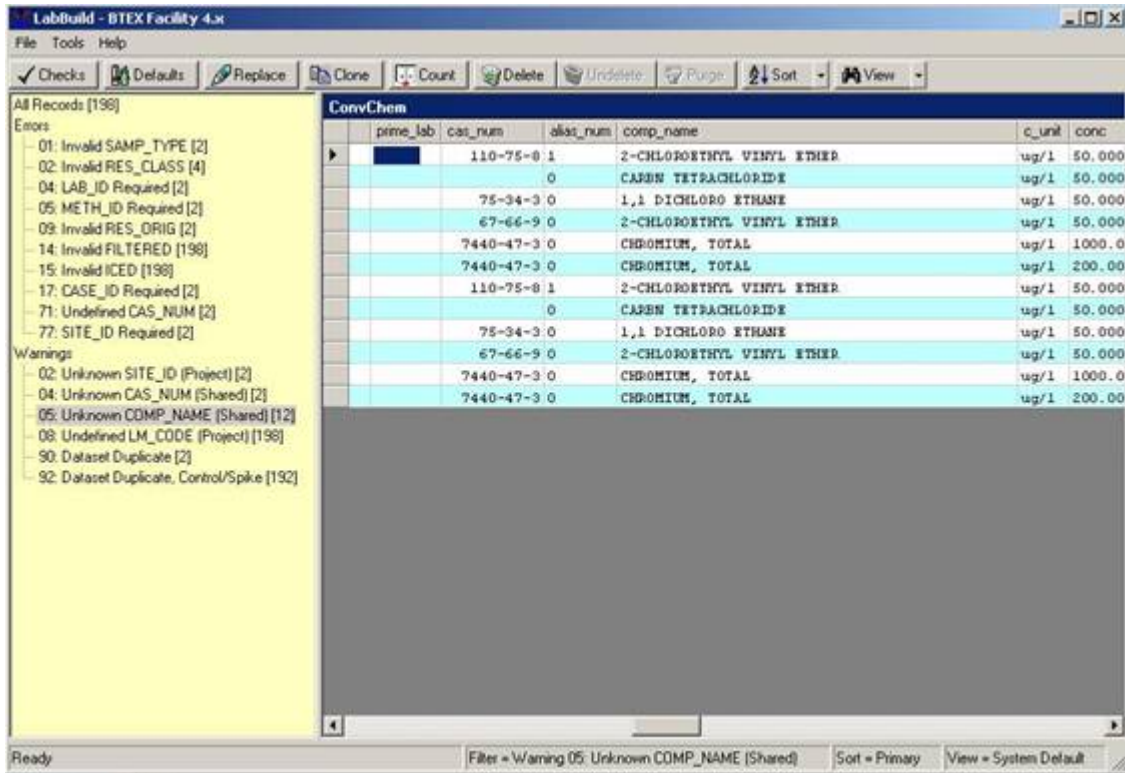


Figure 4. New Lab Build Screen

There is a new LabBuild (as well as the LabBuild Classic). The new LabBuild supports Air and has significant enhancements. The only “gotcha” is that Microsoft requires at least a gigabyte of Ram for the code to work. For large builds, 50,000 records and greater, you might consider at least two gigabytes of Ram. Your other option is the LabBuild Classic.

AutoCAD

AutoCAD 2004 and 2005

GIS\Key runs in both versions. Both versions require a \$350 Quicksurf upgrade. For those of you that do not want to upgrade your Quicksurf you can still use GIS\Key to generate files and post data to sample sites.

AutoCAD 2005

GIS\Key supports the enhanced color properties.

Sections

We have again enhanced sections for geologists. You can now evenly space wells on a section and then move them back to their projected positions. You can remove wells from the sections. You can directly edit other units from the section to the database. And, you have greater control on the display of geophysics.

Apply Reports and Move with Leaders

When you use the Move application to move a report, a leader immediately appears between the sample point and the report. You can use the command line command; DIMSTYLE to control the leader line and arrow size. If the leader does not appear, type on the command line: ATTREQ and set to "0".

Site Map Symbols

You can now have multiple colors and scales for site map symbols. Symbols can be set to absolute drawing units or dynamically adjusted automatically to be a percentage of your view. Change your view and the map symbols change size. The ADD/Edit functions have been enhanced and for your custom sample site blocks, you can create a GIF file and display the block in AutoCAD.

This document was created with Win2PDF available at <http://www.daneprairie.com>.
The unregistered version of Win2PDF is for evaluation or non-commercial use only.