

Published by:  
GIS\Solutions, Inc.  
1870 Olympic Blvd  
Suite 110  
Walnut Creek, CA 94596  
Tel: (925) 944-3720  
Fax: (925) 944-3302  
<http://www.giskey.com>  
E-mail: [sales@giskey.com](mailto:sales@giskey.com)

# The "Key" Newsletter

First Quarter 2003

Microsoft  
CERTIFIED  
Partner

autodesk  
authorized developer



ESRI  
Technology  
AUTHORIZED  
BUSINESS PARTNER

## GIS\Key v4.0 Released!

We'd like to thank our many clients for their continuing interest in GIS\Solutions' software and services for environmental professionals. We have listened closely to you about what you would like to see in a new version of GIS\Key. In response, GIS\Key v4.0 will have many exciting and requested NEW features and 2 NEW modules available!

GIS\Key v4.0 is available as a free upgrade for those on our maintenance program (paid upgrade for others), so please contact GIS\Solutions for download instructions (and pricing).

The main system has many new features to help you integrate more data types and be even more efficient in managing and analyzing your data. These are summarized below:

1. Standard NPDES & DMR Reporting Modules. This functionality existed only as a customization in v3.2.
2. More Geophysical Data Storage; Geophysical Logs/Sections. Sequence Stratigraphy Support
3. User-Configurable Query Screens (Users decide which SmartQuery data filters to activate or skip).

4. Users May Define Additional Data Types by dragging new folders containing user-defined data into GIS\Key projects. Users may then view, organize, search and display that data through the Scout Project Manager

5. Standard SQL Data Repository. This is important for enhanced performance in GIS\Key enterprise applications.

6. Query & Output Browser Files are now Savable in Access Database Format (in addition to ASCII, spreadsheet and .dbf formats).

7. On-Board Crystal Report Viewer (save reports in Crystal format for later viewing/printing).

8. Expanded configuration options for user-defined reports

9. Post Chemistry and Hydrology Reports to a Project Map. There are many new formatting options!

10. Query speeds increased by a factor of 4.

11. Automated Project Archiving/Extracting. When you extract an archive, Scout sets up a project for the extracted data automatically.

12. Reporting Tool icons available at root Project Directory and on Scout menu bar.



## In This Issue ...

**GIS\Key v 4.0 Released!  
Current Version**

**Future Enhancements**

**User's Group/Bulletin Board?**

**Technical Support Corner**

**New Developments**

## Future v4.x Improvements

Also in response to our clients' requests, we are planning to include the following new features later in the v4.x series:

- ? Automated Grain Size [Box] Plots.
- ? LabBuild Upgrade — totally new interface, spreadsheet-like data editing.
- ? ArcView v8.x Compatibility

## What do you think?

**Would a GIS\Key Users' Group or a Bulletin Board to post questions and answers be helpful?**

**Call our Walnut Creek office and give us your feedback.**

**925-944-3720**

# The "Key" Newsletter

First Quarter 2003

**Things are a-changing!!**

We have redesigned our web site.

<http://www.giskey.com>

We have hidden an "Easter Egg" somewhere on our website. Be one of the first five people to find it, contact us, and win a prize.

See details below\*

## Technical Support Corner

### Hot Tip!

The Scout Reporting Tool Browser is a versatile tool for viewing, editing and saving data selected from the Reporting Tool. For example, you can use it to show 'Hits Only':

1. At the end of the Scout Reporting Tool (e.g., just before clicking 'View Results' or 'Finish'), click the 'Browse...' button at the lower right to display the browser table.
2. This browser table is editable and will not affect your original data:
  - ? To edit the table, select 'Edit' – 'Replace',
  - ? To delete records, select 'Edit' – 'Delete', and
  - ? To save the table to a file (e.g. Excel), select 'File' – 'Save As'.
3. To show 'Hits Only', select 'Edit' – 'Delete' and enter the following in the 'For' box:

Conc = "<"

This delete statement assumes that you have not applied an adjustment to the concentration (i.e., not removed the '<'). You can save the task for future use in the browser by naming the task and clicking the 'Save' button. Then click 'Okay'. Then complete the Reporting Tool and finish the output.

## New Developments

### **New GIS\Key v4.0 Add-on Modules Available Soon!:**

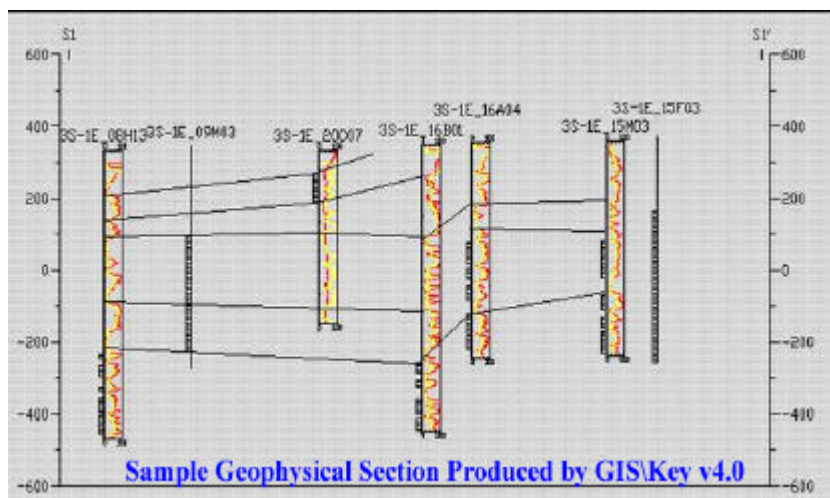
We're finishing up Beta Testing on 2 new v4.x modules which will greatly enhance your data collection efficiency and your ability to distribute GIS\Key data. They are:

#### Field Data Collection Module

- ? Collect data in the field on a Pocket PC
- ? Synchronize automatically with GIS\Key's database! Can be used with any data management system

#### GIS\Key Reader

- ? Ideal for project managers and occasional users (like your clients!)
- ? Simplified query tools and data output
- ? Opens GIS\Key projects and produces reports plus Excel graph, mapping and user-customized exports
- ? Works on chemistry primary results, geology and fluid level data
- ? Low cost; no training required!



**Need to get in touch with us??**

**Here's how.**

Tel: 925-944-3720

Dept/Person	Voicemail	E-mail
Sales	main	sales@giskey.com
Tech Support	3#	support@giskey.com
Sue Poole	main	spoole@giskey.com
Ken Stevens	main	kstevens@giskey.com
Tom Rooze	main	trooze@giskey.com
License Key	main	license@giskey.com

#### Contest Details:

- ? Only the first five people to contact us, with the location, are eligible for a prize
- ? One winner per office, per quarter
- ? Winners to be announced in next newsletter (with permission)
- ? Prizes may not be returned or exchanged
- ? Employees and associates not eligible